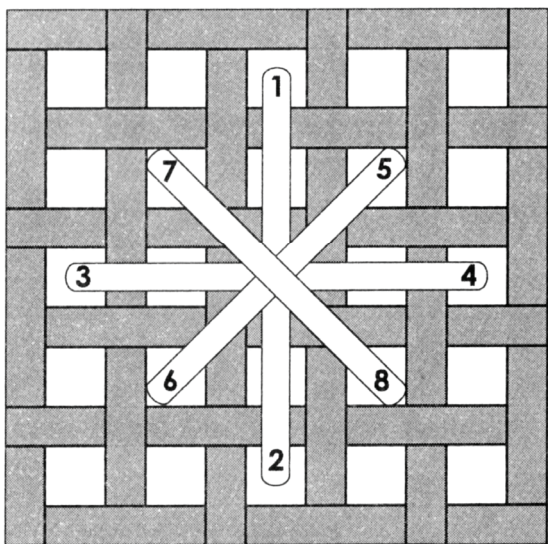


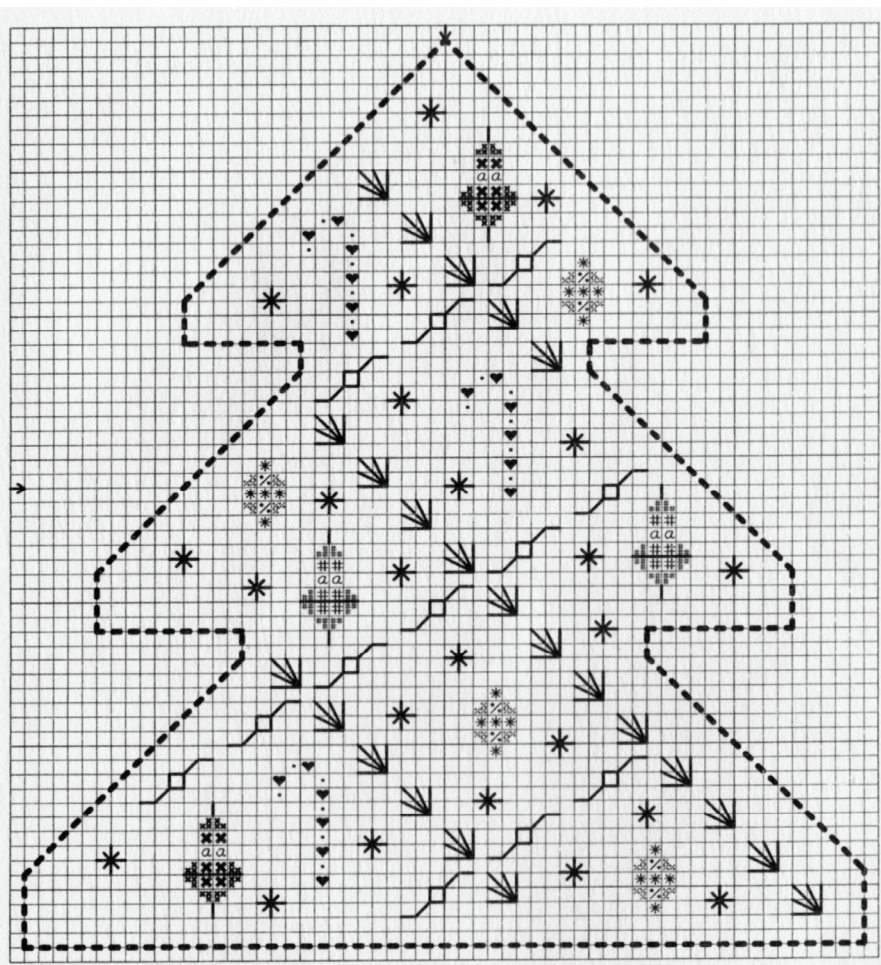
Ray Stitch



Star Stitch

Pattern for
Crewel Yule
 By
Monica Ferris

Pattern Design by
Lenore Fischer of
At River's End



Symbol	Anchor	Kreinik Braid	Color
•	2		White
#	85		Orchid-LT
✕	433		Ice Blue-MED
%	1038		Sky Blue
♥	9046		Christmas Red
*		001	Kreinik # 4 Braid-Silver
<i>a</i>		002HL	Kreinik # 4 Braid-Gold High Lustre

FABRIC: Zweigart 28 ct. Cashel Linen—Dark Teal Green
 (3281-641-55)

STITCH COUNT: 58 wide × 63 high

FINISHED SIZE OF ORNAMENT: 4 1/8 w × 4 1/2 h inches

DESIGN SIZE: 28 COUNT (OVER 2): 4 1/8 w × 4 1/2 h inches

INSTRUCTIONS:

- Cut two 5 1/2 inch wide × 6 inch high pieces of linen. Find center on one piece of linen and baste using contrasting color thread along *dark dashed lines* shown on chart. This will become the sewing line when assembling the ornament.
- Stitch design as specified on the chart. Use two strands of floss or one strand of #4 Kreinik braid for cross stitches and three-quarter stitches. Use one strand of Kreinik braid for backstitches.
- Work Ray Stitches with one strand of 001 Silver Kreinik braid. Work Star Stitches with one strand of 002HL Gold High Lustre Kreinik braid. Work all other backstitching with one strand of 002HL Gold High Lustre Kreinik braid.
- Repeat the design on the other piece of fabric.
- When all stitching is completed, carefully press on wrong sides. Trim fabric 1/2 inch away from the basting line. Zigzag or stay stitch along edges to prevent fraying of the linen along the edges.
- (Optional) Cut two pieces of lightweight interfacing to match the trimmed ornament's size and shape within the basted lines. Place one piece of interfacing on *wrong* side of each ornament piece. Fuse to linen according to manufacturer's directions.
- With *right* sides of the stitched ornament facing, stitch the pieces of linen fabric together along basted line allowing 1/2 inch seams and using sewing thread to match the fabric. Leave an opening on the bottom for turning and stuffing. Carefully clip and trim corners to reduce bulk. Turn right sides out and press. Press in 1/2 inch seam allowances on opening. Stuff lightly with polyester fiberfill. Fold in seam allowances on bottom opening and blind stitch closed with matching sewing thread.
- Attach cording or braid to top of ornament for hanger.